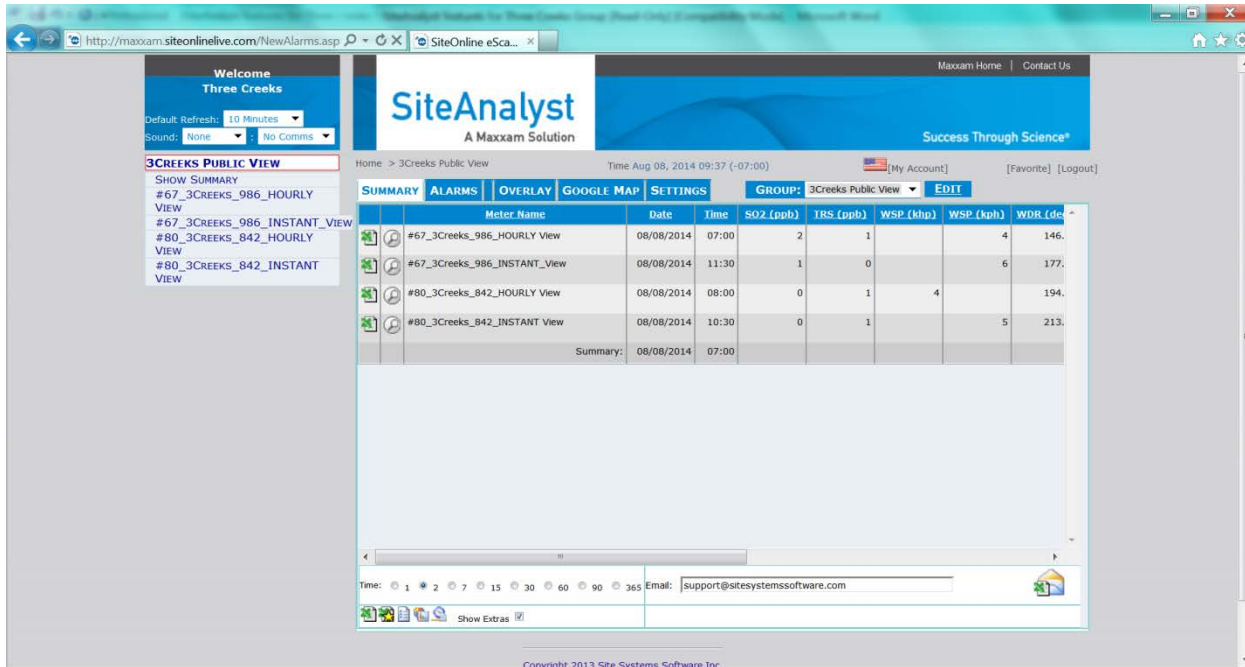


SiteAnalyst – Three Creeks Air Monitoring Stations Frequently Asked Questions (FAQ's)

Q1: What is SiteAnalyst? How do I get set up on SiteAnalyst

A1: SiteAnalyst is a web-based remote monitoring software platform that displays measured values of measurement devices such as exists in the ambient air monitoring trailers for the Three Creeks area. To get started on the SiteAnalyst system, a remote monitoring station needs to be set up with the communication protocols to the remote system – SiteAnalyst. This setup has been established for the Three Creeks 986b and the Three Creeks 842b air monitoring stations. SiteAnalyst data can be accessed through the Northern Sunrise Community website at:

<http://www.northernsunrise.net/modules/news/newsitem.php?ItemId=36>



Q2 : What type of information is available on SiteAnalyst?

A2: The SiteAnalyst system stores remote monitoring data from any monitoring or metering device that has remote communications capabilities. For the Three Creeks area, Maxxam's SiteAnalyst software system is remotely storing ambient air measurement data. The data is polled at 15 minute and at hourly average intervals from the 2 ambient stations in the region. The data includes ambient air monitoring for a number of air quality parameters – Total Hydrocarbon (THC), methane, non-methane, sulphur dioxide (SO2), Total Reduced Sulphur (TRS), hydrogen Sulphide (H2S), barometric pressure (BP), relative humidity (RH%), wind speed, and wind direction.

Q3: Where are the Three Creeks 986b and the Three Creeks 842b air monitoring stations?

A3:

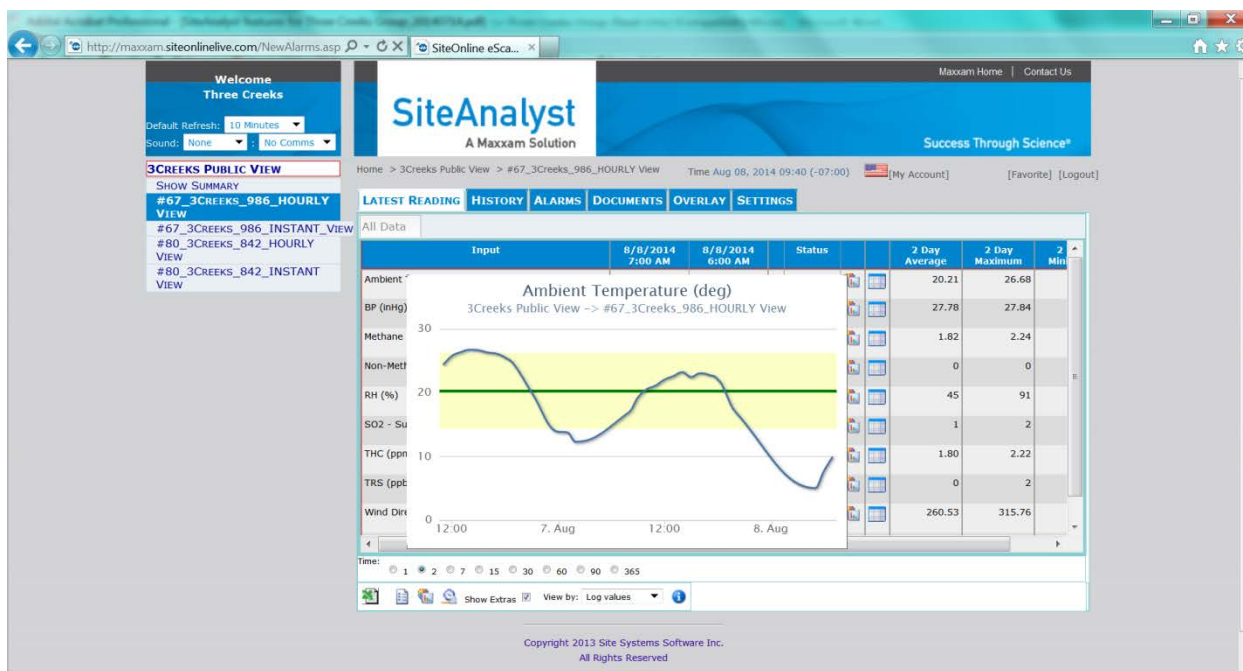
| Station Name | GPS Location |
|---|--|
| Three Creeks 986b Station | Latitude: 56° 22' 33.7" N, Longitude: 116° 56' 26.2" W |
| Three Creeks 842b Station | Latitude: 56° 16' 26.7" N, Longitude: 116° 58' 53.3" W |

Q4: What browsers are required to use SiteAnalyst?

A4: Currently, the SiteAnalyst system is best viewed under Microsoft Internet Explorer 8 or higher. There are possible compatibility issues with specific browser settings in Internet Explorer 10 but this can be easily resolved. There is a compatibility setting that is located at the top of Internet Explorer task bar. The button looks like a broken page. By clicking on the broken page button, it will prompt the user to change compatibility settings which will rectify any issues the user has. Currently, SiteAnalyst is viewable with Firefox and Google Chrome but is best viewed in Internet Explorer. The Google Chrome browser will work if the compatibility settings are modified to allow viewing using older versions of Internet Explorer.

Q5: How can I see a graph of the data?

A5: The SiteAnalyst system has both basic and advanced graphing capabilities. There are hovers over graphs that can plot the readings for specific parameters over periods of time. See below figure for an example for Ambient Temperature of 2 days.

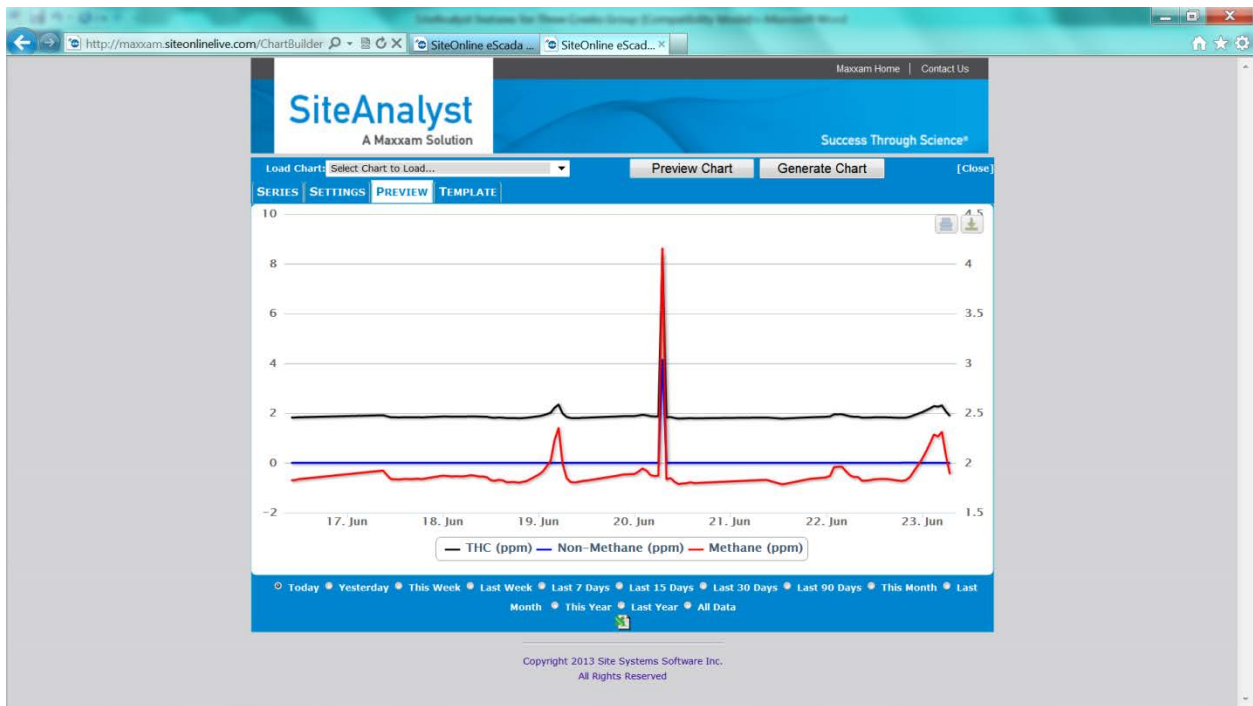
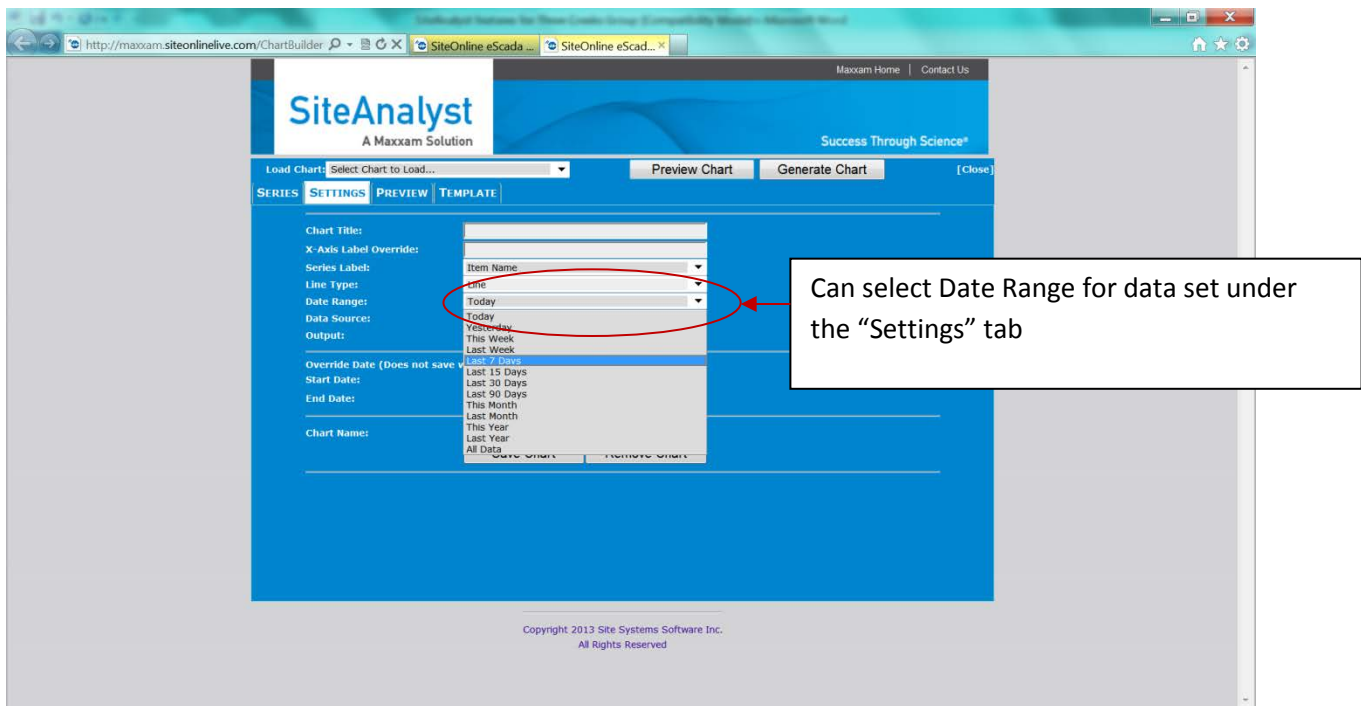


Advanced graphing of analytical data can be done within SiteAnalyst by selecting/clicking the graph icon at the bottom of the page. It is the fourth icon in from the left along the bottom row of icons. By clicking on this icon, it will bring up a dialog box which allows the user to select the data set that they want to graph. The dialog box has a number of drop-down options for the user to pick the various data items to graph in a standard line graph manner similar to that of Microsoft Excel.

Graphing icon – used to create/build customized

| Meter Name | Date | Time | SO2 (ppb) | TRS (ppb) | WSP (khp) | WSP (kph) | WDR (de |
|------------------------------|------------|------------|-----------|-----------|-----------|-----------|---------|
| #67_3Creeks_986_HOURLY View | 06/05/2014 | 10:00 | 1 | 0 | | 10 | 322. |
| #67_3Creeks_986_INSTANT_View | 06/23/2014 | 10:00 | 0 | 0 | | 4 | 192. |
| #80_3Creeks_842_HOURLY View | 06/23/2014 | 07:00 | 0 | 0 | 3 | | 122. |
| #80_3Creeks_842_INSTANT View | 06/23/2014 | 10:00 | 0 | 0 | | 2 | 188. |
| Summary: | | 06/05/2014 | 10:00 | | | | |

Multiple data sets can be selected and custom graphs can be created within SiteAnalyst. Must select the "Item" to choose the data parameter. Example: Methane



Q6: Who can I contact for more information?

A6: Karla Reesor at 403 807 2995 or karlareesor@movingfwd.ca. Karla Reesor is the facilitator for the Three Creeks Air Monitoring Subcommittee.

Q7: What is the difference between “raw” and final data?

A7: SiteAnalyst data is considered “raw” data. This data set includes readings from the ambient station analyzers without any correction to the data set. Data contained on this webpage is automatically pulled from the Three Creeks monitoring stations and is intended for public awareness. The data has not undergone quality control and quality assurance procedures and may contain errors. The data on this page should not be used in published documents. Data integrity and validity may be affected by instrument malfunctions, connection problems, quality assurance and quality control requirements, instrument calibration times or power failures. Data confirmed to be invalid for the above reasons could be deleted by the data provider.

Q8: What does it mean to have “quality control and quality assurance (QA/QC)” of the data?

A8: Quality Control: The procedures are done by a technician to make sure the instrument is running well and that data is good - this includes but is not limited to verifying everything they are using (calibration gases, calibrators, parts/tools, etc). Events that affect data integrity and validity will be considered and data will be managed accordingly. The events include but are not limited to instrument malfunctions, connection problems, quality assurance and quality control requirements, instrument calibration times or power failures.

Quality Assurance: All the other documentation and procedures that helps assure clients/public that the above Quality Control system has merit - this includes but is not limited to instrument records, calibration records, training records, root cause analyses of problems, having Standard Operation Procedures (SOPs) and Work Instructions (WIs) so everyone is following the same procedure, making sure we are doing audits to catch deficiencies and correcting them, and so on.

Q9: What are the different reports that are available?

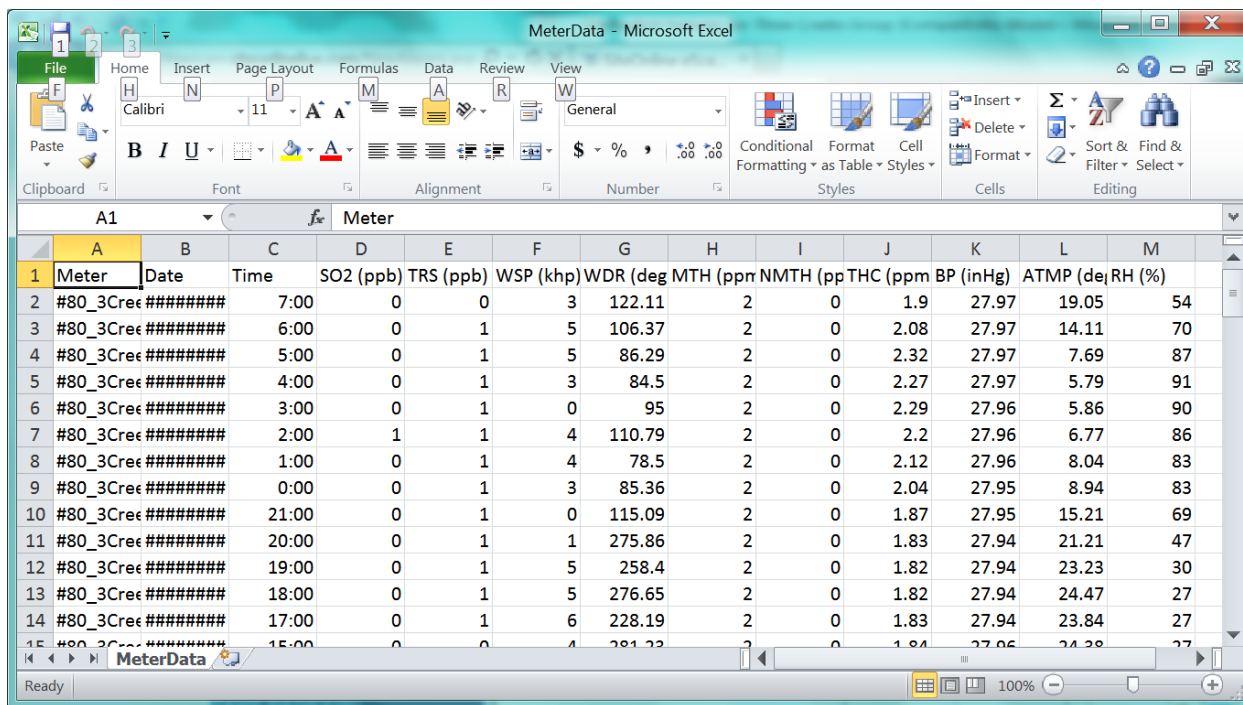
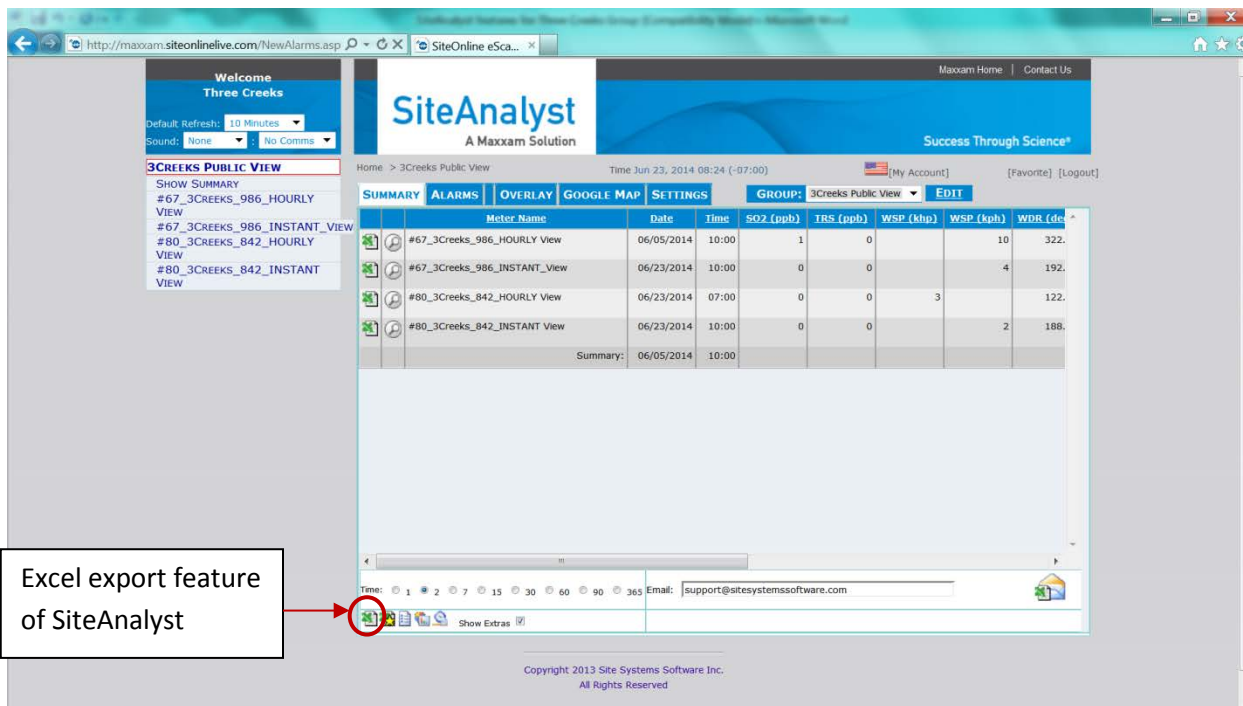
A9: The reports that can be available from SiteAnalyst are all based on the data sets available. The basic report generator formats are Microsoft Excel and various user defined and customized graphs within the SiteAnalyst system.

Basic MS Excel Report Example

| Meter | Date | Time | SO2 (ppb) | TRS (ppb) | WSP (khp) | WDR (deg) | MTH (ppm) | NMTH (pp) | THC (ppm) | BP (inHg) | ATMP (deg) | RH (%) |
|-----------|------|-------|-----------|-----------|-----------|-----------|-----------|-----------|-----------|-----------|------------|--------|
| #80_3Cree | | 7:00 | 0 | 0 | 3 | 122.11 | 2 | 0 | 1.9 | 27.97 | 19.05 | 54 |
| #80_3Cree | | 6:00 | 0 | 1 | 5 | 106.37 | 2 | 0 | 2.08 | 27.97 | 14.11 | 70 |
| #80_3Cree | | 5:00 | 0 | 1 | 5 | 86.29 | 2 | 0 | 2.32 | 27.97 | 7.69 | 87 |
| #80_3Cree | | 4:00 | 0 | 1 | 3 | 84.5 | 2 | 0 | 2.27 | 27.97 | 5.79 | 91 |
| #80_3Cree | | 3:00 | 0 | 1 | 0 | 95 | 2 | 0 | 2.29 | 27.96 | 5.86 | 90 |
| #80_3Cree | | 2:00 | 1 | 1 | 4 | 110.79 | 2 | 0 | 2.2 | 27.96 | 6.77 | 86 |
| #80_3Cree | | 1:00 | 0 | 1 | 4 | 78.5 | 2 | 0 | 2.12 | 27.96 | 8.04 | 83 |
| #80_3Cree | | 0:00 | 0 | 1 | 3 | 85.36 | 2 | 0 | 2.04 | 27.95 | 8.94 | 83 |
| #80_3Cree | | 21:00 | 0 | 1 | 0 | 115.09 | 2 | 0 | 1.87 | 27.95 | 15.21 | 69 |
| #80_3Cree | | 20:00 | 0 | 1 | 1 | 275.86 | 2 | 0 | 1.83 | 27.94 | 21.21 | 47 |
| #80_3Cree | | 19:00 | 0 | 1 | 5 | 258.4 | 2 | 0 | 1.82 | 27.94 | 23.23 | 30 |
| #80_3Cree | | 18:00 | 0 | 1 | 5 | 276.65 | 2 | 0 | 1.82 | 27.94 | 24.47 | 27 |
| #80_3Cree | | 17:00 | 0 | 1 | 6 | 228.19 | 2 | 0 | 1.83 | 27.94 | 23.84 | 27 |
| #80_3Cree | | 15:00 | 0 | 0 | 4 | 281.22 | 2 | 0 | 1.84 | 27.96 | 24.28 | 27 |

Q10: How do I export data from SiteAnalyst?

A10: SiteAnalyst for the public Three Creeks sites does allow users to export the data from the system by selecting and clicking on the particular monitoring station data then clicking on the first icon on the bottom icon row. It looks like a Microsoft Excel icon. It will ask the user to open or save the file. By clicking “Open”, the file will open in excel and can be downloaded or saved to the user’s desktop or computer.



Q11: Where can I find more information about air monitoring?

A11: Please refer to Clean Air Strategic Alliance website. Under the partners and links tab, there is information about air monitoring in the section title Additional Air Quality Resources.